

PV Mounting System For Crystalline Solar Module

THE POWER OF ASTRONERGY





Tile on-roof PV Mounting System

- Installation on tiles roof.
- Various quick roof hooks with different strength and structure are available.
- Quick installation due to pre-assembly and easy attachment.



Metal Sheet Roof PV Mounting Systems

- For different kinds of metal sheet roofs, including corrugated roof, trapezoidal roof, standing seam roof and etc.
- Various roof connections are available.
- Special design to achieve good water proofing performance



Flat Roof PV Mounting Systems

- Installation on flat roof.
- Standard series or adjustable types are available to satisfy various installation demands and customers' requirements.
- Triangle structure is made of Aluminum or galvanized steel.
- Ballast frame or concrete foundation.
- Windstream system to gain a no ballast option.

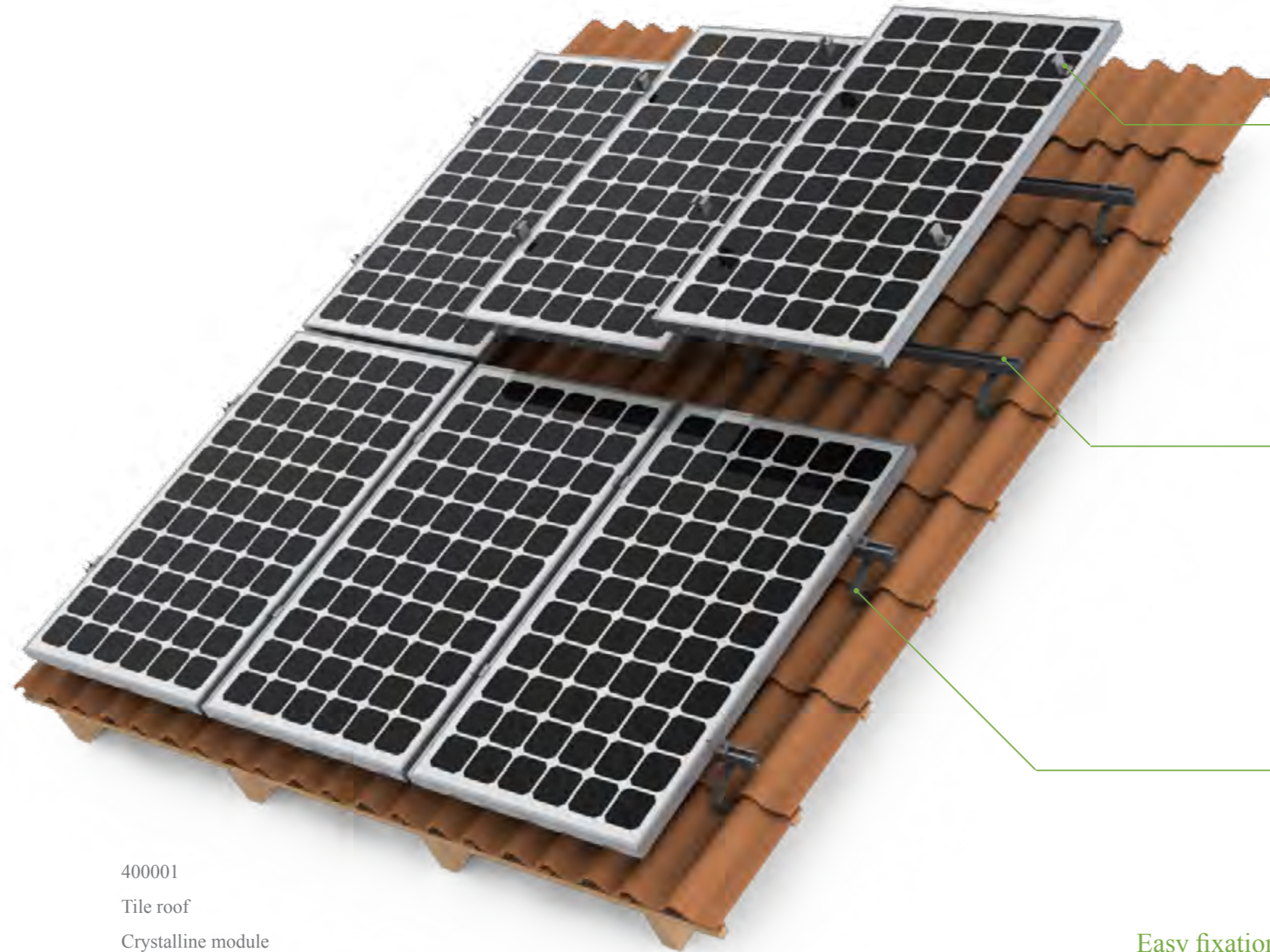


Open Terrain PV Mounting Systems

- Suit for large PV station projects.
- Various steel or aluminum profile is available.
- Each type can adopt screw pile or concrete foundation.

- 02 TILE ON - ROOF PV MOUNTING SYSTEM
- 04 METAL SHEET ROOF PV MOUNTING SYSTEMS
- 10 FLAT ROOF PV MOUNTING SYSTEMS
- 14 OPEN TERRAIN PV MOUNTING SYSTEMS
- 22 COMPONENTS OVERVIEW

TILE ON - ROOF PV MOUNTING SYSTEM



Module clamp with click - in nut



Rail with side groove
Easy rail fixing



Roof Hook Z1

Technical Data

System No.	400001
Roof type:	Tile roof
Module type:	Crystalline module
Installation type:	Parallel to roof
Module orientation:	Horizontal or vertical
Max. wind speed to withstand:	On request
Max. snow pressure to withstand:	On request
Material of main components:	Stainless steel 304 & Aluminium 6063T6
Colour:	Silvery white
Warranty:	10 years

Easy fixation

Step 1 : Fix the roof hook on the wood beam with wood screw.



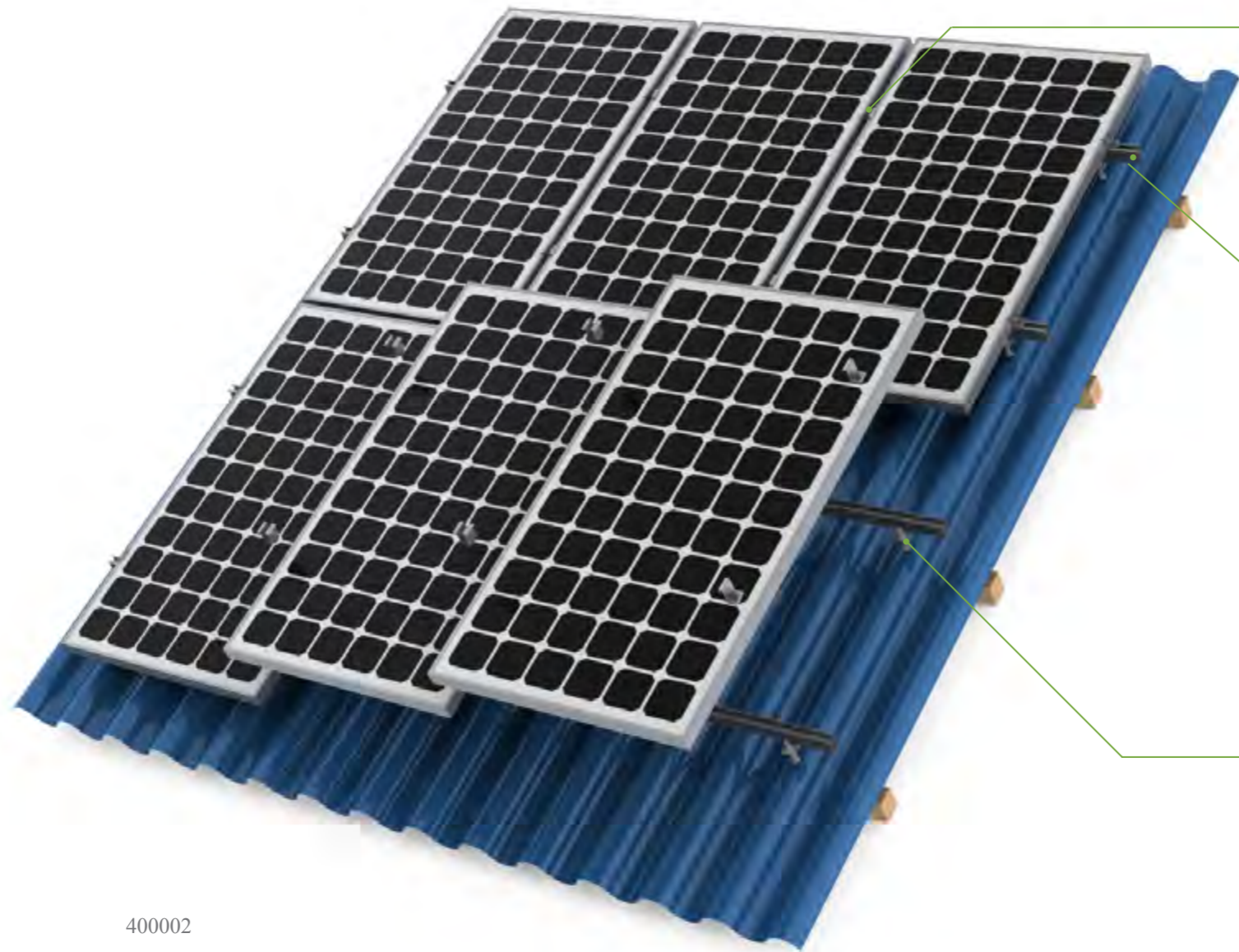
Step 2: Put the aluminium rails on the top of roof hook, fixing it with click-in nut and bolt.



Step 3: Fix the module on the rail by module clamp with bolt and click-in nut.



METAL SHEET ROOF PV MOUNTING SYSTEM --CORRUGATED



Module clamp with
click - in nut



Rail with side groove
Easy rail fixing



Hanger bolt with 90 degree bracket
Water proofing

Technical Data

System No.	400002
Roof type:	Corrugated roof
Module type:	Crystalline module
Installation type:	Parallel to roof
Module orientation:	Horizontal or vertical
Max. wind speed to withstand:	On request
Max. snow pressure to withstand:	On request
Material of main components:	Stainless steel 304 & Aluminium 6063T6
Colour:	Silvery white
Warranty:	10 years

Easy Fixation

Step1. Drill a hole from the roof surface all the way to the beam, then fasten the hanger bolt to the hole.



Step2. Insert the click-in nut into the slot of the rail, and put the rail onto the hanger bolt, then fasten the bolt and nut to fix the rail.

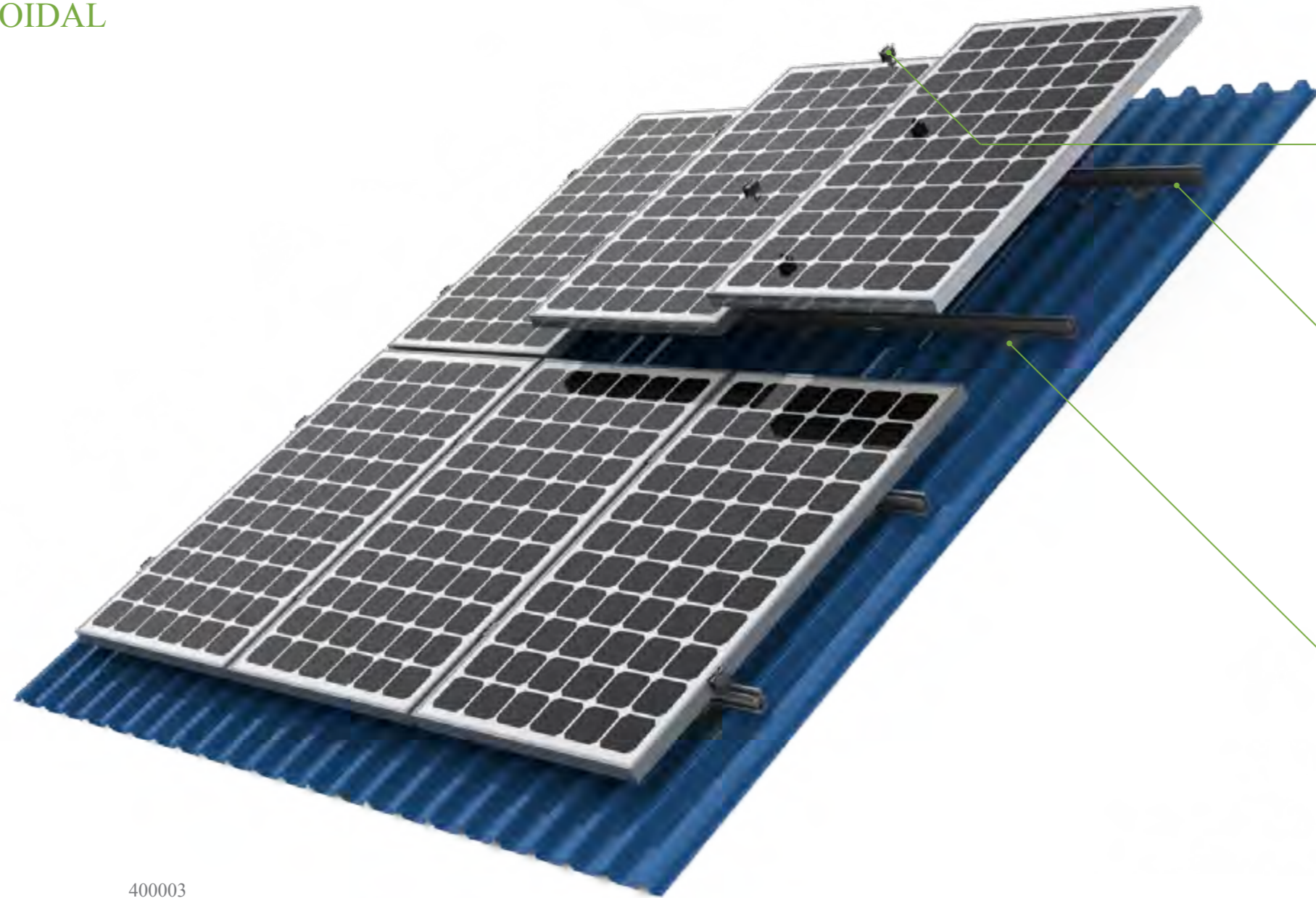


Step3: Fix the module on the rail by module clamp with bolt and click-in nut.



METAL SHEET ROOF PV MOUNTING SYSTEM

--TRAPEZOIDAL



Module clamp with click - in nut



Rail with side groove
Easy rail fixing



Trapezoidal roof clamp

Technical Data

System No.	400003
Roof type:	Trapezoidal roof
Module type :	Crystalline module
Installation type:	Parallel on roof
Module orientation:	Horizontal or vertical
Max. wind speed to withstand:	On request
Max. snow pressure to withstand:	On request
Other components:	Stainless steel 304 & Aluminium 6063T6
Colour:	Silvery white
Warranty:	10 years

Easy Fixation

Step1. Fix the bracket onto the trapezoidal roof with four tapping screws.



Step2. Fix the rail to the bracket with bolt and nut.

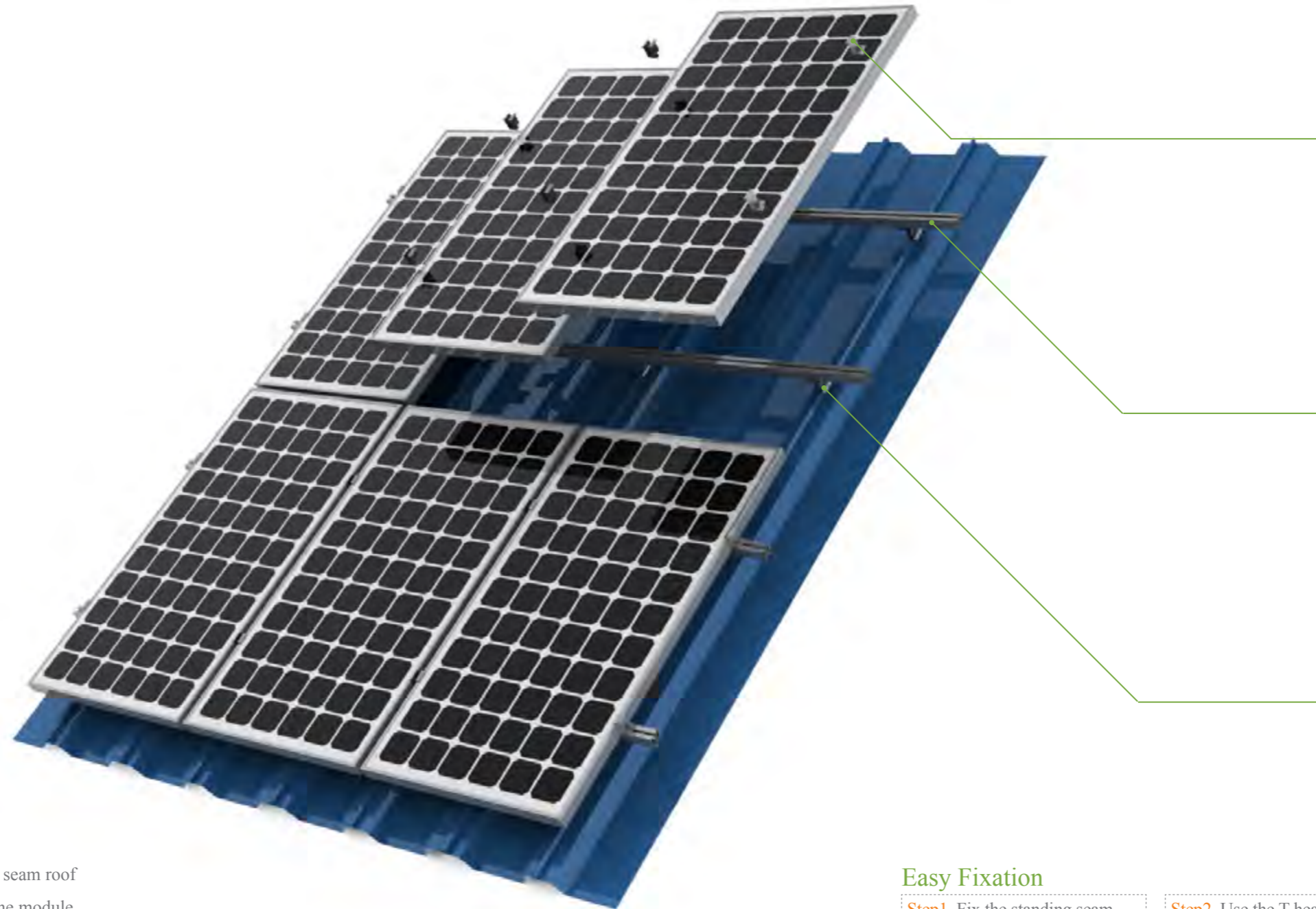


Step3. Fix the module on the rail by module clamp with bolt and click-in nut.



METAL SHEET ROOF PV MOUNTING SYSTEM

--STANDING SEAM



Technical Data

System No.	400004
Roof type:	Standing seam roof
Module type :	Crystalline module
Installation type:	Parallel on roof
Module orientation:	Horizontal or vertical
Max. wind speed to withstand:	On request
Max. snow pressure to withstand:	On request
Material of main components:	Stainless steel 304 & Aluminium 6063T6
Colour:	Silvery white
Warranty:	10 years

Easy Fixation

Step1. Fix the standing seam clamp to the raised seam of adjacent metal sheets on roof.



Step2. Use the T-head bolt and flange nut to fix the rail to the clamp.

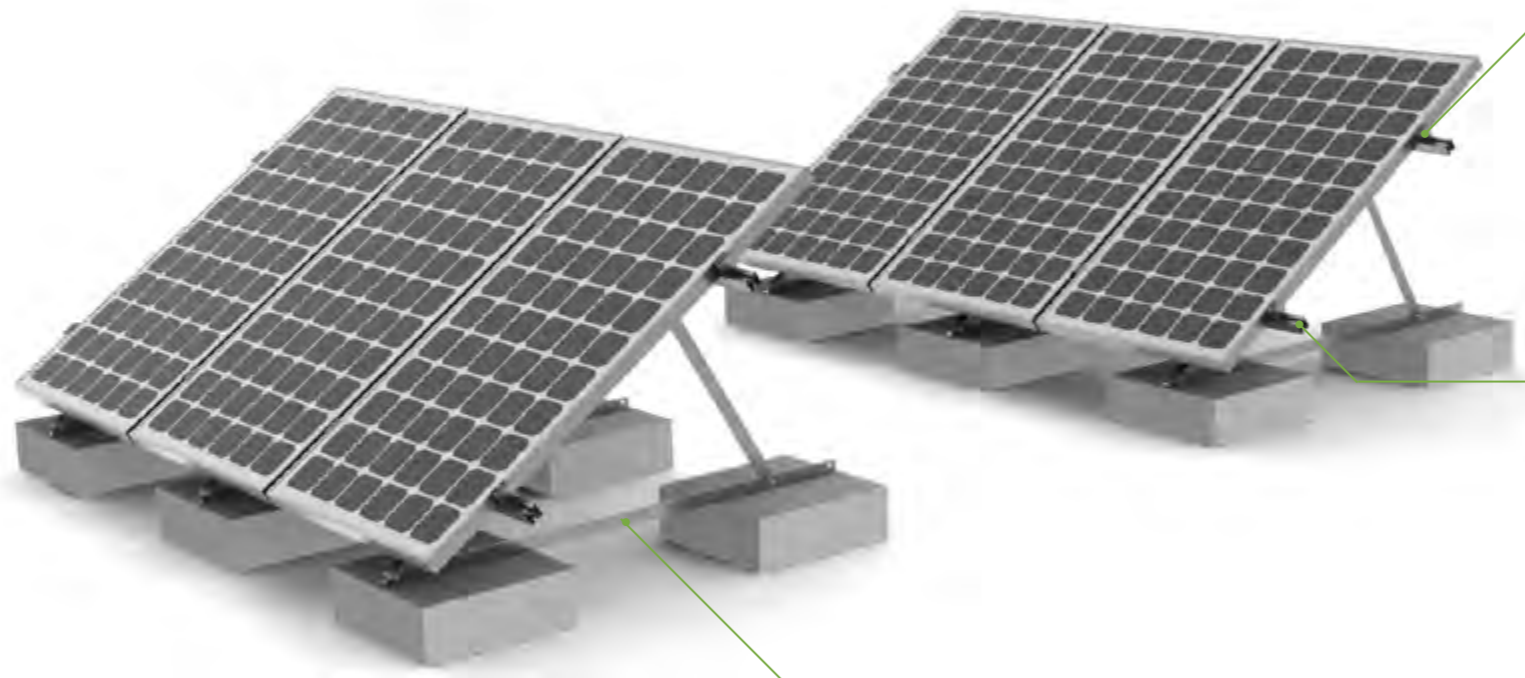


Step3. Fix the module on the rail by module clamp with bolt and square nut.



FLATROOF PV MOUNTING SYSTEM

--CONCRETE FOUNDATION



Technical Data

System No.	400005
Roof type:	Flat roof
Module type :	Crystalline module
Module orientation:	Horizontal or vertical
Installation angle:	On request
Max. wind speed to withstand:	On request
Max. snow pressure to withstand:	On request
Bearing Bar	Al6063 T6 or Q235B
Material of main components:	Stainless steel 304 & Aluminium 6063T6
Colour:	Silvery white
Warranty:	10 years

Easy Fixation

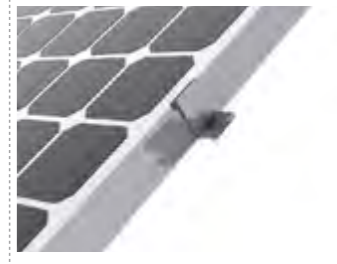
Step1. Fix the triangular supporting frames onto the concrete basement.



Step2: Fix the rail on to the triangular supporting frames with T-head bolt and flange nut.

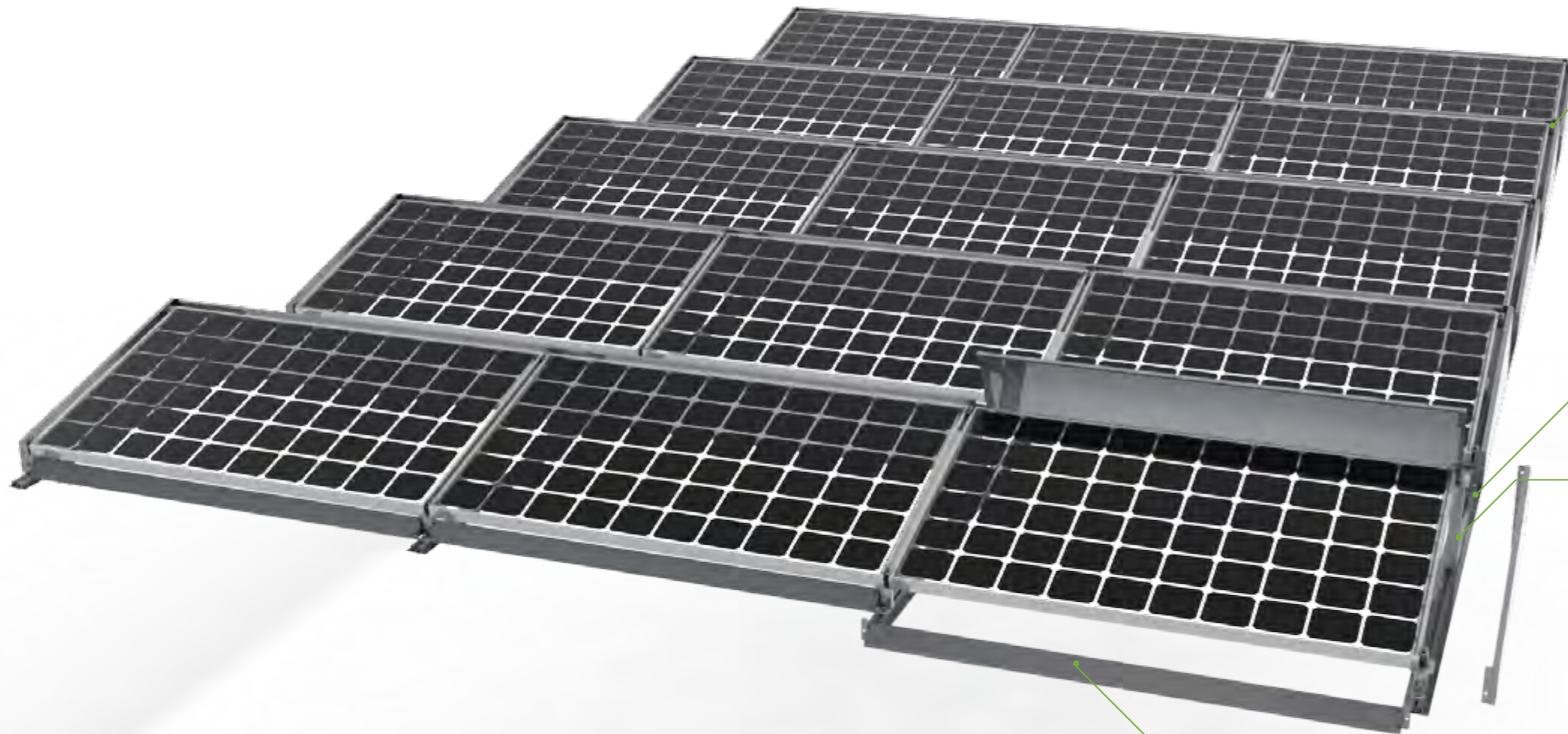


Step3. Fix the module on the rail by module clamp with bolt and square nut.



FLATROOF PV MOUNTING SYSTEM

--WINDSTREAM



Module clamp with square nut



Aluminium Rail



Supporting Legs



Metal plates

Technical Data

System No.	400006
Roof type:	Flat roof
Module type :	Crystalline module
Module orientation:	Horizontal
Installation angle:	On request
Max. wind speed to withstand:	On request
Max. snow pressure to withstand:	On request
Material of main components:	Stainless steel 304 & Aluminium 6063T6
Colour:	Silvery white
Warranty:	10 years

Step1. Put the rail on the flat roof and fix the supporting leg on the rail .



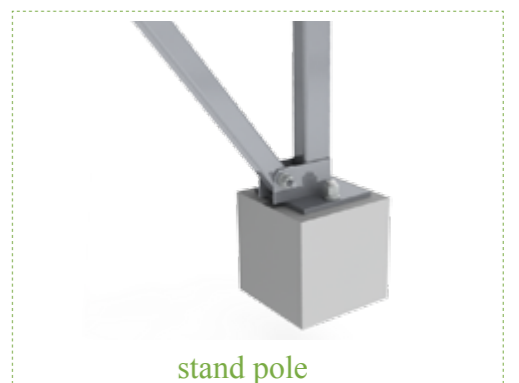
Step2: Fix the foreplate on to the leg and use module clamp to fix the module on the supporting leg.



Step3. Fix the rest parts of the plates on the supporting leg.



OPEN TERRAIN CLIP-ON PV MOUNTING SYSTEM --CONCRETE FOUNDATION



Technical Data

System No.	400007
Module type	Crystalline module
Module arrangement	2 rows in vertical
Installation angle	On request
Ground basement	Concrete foundation
Load bearing	Made on request
Range of module arrangement	Length≤50m
Module fixation	Standard module clamp
Material of cross beam	Q235B galvanized steel
Material of stand pole	Q235B galvanized steel
Color	Silvery white
Warranty	10 years

Easy Fixation

Step1. Fix the stand pole on the concrete foundation with hex nut.



Step2. Use the square nut to fix the cross beam onto the sloped beam.



Step3. Fix the module on the rail by module clamp with bolt and square nut.



OPEN TERRAIN PLUG-IN PV MOUNTING SYSTEM --CONCRETE FOUNDATION



Aluminium rail



Stand pole



Sloped beam

Technical Data

System No.	400008
Module type	Crystalline module
Module arrangement	2 rows in vertical
Installation angle	On request
Ground basement	Concrete foundation
Load bearing	Made on request
Range of module arrangement	Length≤50m
Module fixation	Plug - in aluminium rail
Material of cross beam	Al 6063T6
Material of stand pole	Q235B galvanized steel
Color	Silvery white
Warranty	10 years

Easy Fixation

Step1. Fix the stand pole on the concrete foundation with hex nut.



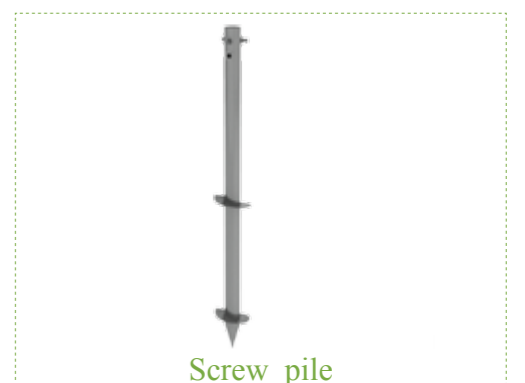
Step2. Fix the aluminium rail on the sloped beam.



Step3. Plug the module in the rail, then insert the bolt through the hole of rail to fix the module.



OPEN TERRAIN CLIP-ON PV MOUNTING SYSTEM --SCREW PILE FOUNDATION



Technical Data

System No.	400009
Module type	Crystalline module
Module arrangement	2 rows in vertical
Installation angle	On request
Ground basement	Screw pile
Load bearing	Made on request
Range of module arrangement	Length≤50m
Module fixation	Standard module clamp
Material of cross beam	Q235B galvanized steel
Material of screw pile	Q235B galvanized steel
Color	Silvery white
Warranty	10 years

Easy Fixation

Step1. Drill the screw pile into the ground and fix the supporting post of the racks on the screw pile.



Step2. Fix the C-shaped steel rail to the sloped beam with square nut.

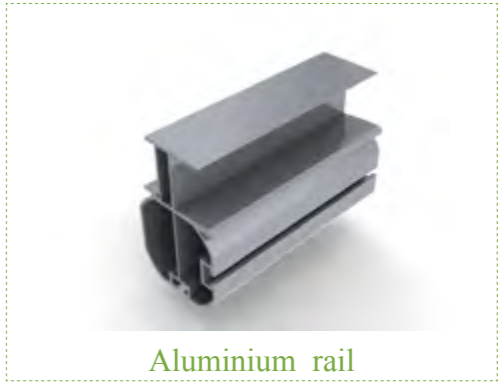


Step3. Fix the module on the rail by module clamp with bolt and square nut.



OPEN TERRAIN PLUG-IN PV MOUNTING SYSTEM

--SCREW PILE FOUNDATION



Aluminium rail



Sloped beam



Screw pile

Technical Data

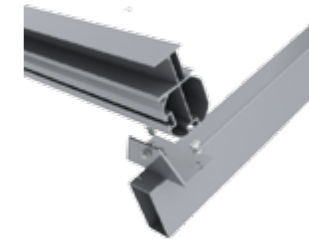
System No.	400010
Module type	Crystalline module
Module arrangement	2 rows in vertical
Installation angle	On request
Ground basement	Screw pile
Load bearing	Made on request
Range of module arrangement	Length≤50m
Module fixation	Plug-in aluminium rail
Material of cross beam	Al 6063T6
Material of screw pile	Q235B galvanized steel.
Color	Silvery white
Warranty	10 years

Easy Fixation

Step1. Drill the screw pile into the ground and fix the supporting post of the racks on the screw pile.



Step2. Fix the aluminium rail on the sloped beam.



Step3. Plug the module in the rail, then insert the bolt from the hole of rail to fix the module.





CORPORATE HEADQUARTERS

Chint Solar (ZheJiang) Co., Ltd.
 1335 Bin'an Road, Binjiang District
 Hangzhou, Zhejiang Province, 310053
 China
 Tel: + 86 571 5603 1888
 Fax: + 86 571 5603 2383

MANUFACTURING PLANTS

Hangzhou, Shanghai & Jiuquan

SUBSIDIARIES

Spain

Chint Solar Hispania S.L.
 Paseo de Gracia, 78, 2-2A
 08008 Barcelona,
 Spain
 Tel: + 34 9346 73778
 Fax: + 34 9346 73789

Germany

Astronergy GmbH
 Karlstr. 8
 88212 Ravensburg,
 Germany
 Tel: + 49 (0)751 295096-0
 Fax: + 49 (0)751 295096-39

North America

Astronergy Solar, Inc.
 377 Swift Avenue
 South San Francisco, CA 94080
 USA
 Tel: + 1 650 392 2777
 Fax: + 1 650 392 2778

1 Meadowlands Plaza, Suite 200
 East Rutherford, NJ 07073
 USA

Japan

KoyoAstro Co., Ltd.
 1-5-6, Higashi-Nihonbashi, Chou-ku,
 Tokyo 103-0004,
 Japan
 Tel: + 03 5820 2141
 Fax: + 03 5820 2142

Korea

Astronergy Solar Korea
 Misung Bldg 3F,
 91-5 Banpo-dong, Seocho-gu, Seoul,
 Korea
 Tel: + 82 (0)2 2226 3911
 Fax: + 82 (0)2 2226 3910

Thailand

Astronergy Solar Korea (Thailand) Co., Ltd.
 184/88 Forum Tower 18FL
 Ratchadapisek Rd., Huay-Kwang,
 Bangkok 10320
 Thailand
 Tel: + 662 645 4155
 Fax: + 662 245 3185